

Questions:

Go to :
www.workinghealthy.org
or
call (800) 449-1439 (V/TTY)

*For alternate formats,
translations, and/or to have
this brochure read
to you or explained more
thoroughly please call.*

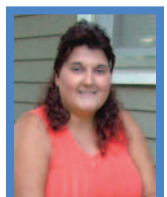
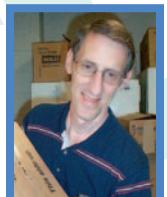


Kansas Health Policy Authority
Working Healthy
900 SW Jackson, Suite 900N
Topeka, KS 66612
Return Service Requested



Working Healthy
Making health care work

Many people with disabilities want to work but worry that doing so could jeopardize their vital health and long term care coverage. Working Healthy offers people with disabilities who are working or interested in working the opportunity to keep their Medicaid coverage while on the job. Through Working Healthy people can earn more, save more, achieve their career goals, and still maintain their health coverage.



Working Healthy

Making health care work



Many people with disabilities want to work but worry that doing so could jeopardize their vital health and long term care coverage. Working Healthy offers people with disabilities who are working or interested in working the opportunity to keep their Medicaid coverage while on the job. Through Working Healthy people can earn more, save more, achieve their career goals, and still maintain their health coverage.

If you are interested in pursuing your career goals but have been afraid that doing so might disqualify you from the health coverage you need, Working Healthy may be the program for you!



Benefits Include...

- The same as those through Kansas Medicaid.
- The opportunity to earn more without the risk of losing health care coverage.
- Higher assets and income eligibility.
- Increased personal and financial independence.
- Help with Medicare Part D prescription drug coverage and plan choices



Eligibility...

If you meet the following criteria, you may be eligible:

- **Assets and Income.** You have assets of less than \$15,000 and net family income below the Working Healthy Program limits.
- **Disability.** You meet the SSI or SSDI disability standard even if you don't currently receive SSI or SSDI.
- **Employment.** You have verified earned income from competitive employment.
- **Residency.** You are a Kansas Resident

Monthly Premium...

Some people may be required to pay a monthly premium. The premium is:

- Never more than 7.5% of your total monthly income and
- Calculated on a sliding fee scale based on your income.

In addition, some of your income may be disregarded in calculating this premium. SRS personnel will be able to calculate the monthly premium for you.



Enrollment...

Your local SRS office can provide you with enrollment information or you can contact a Working Healthy Benefits Specialist in your area. There are seven Benefits Specialists across the state and are available to help you with your benefits and answer questions.

To find out the name of the Benefits Specialist in your area, go to www.workinghealthy.org or call toll free (800) 449-1439 (V/TTY).

